



Termignoni S.p.A.
Via della Rampina, 1
I-15077 Predosa (AL)
Italy

**APPLICATION FOR APPROVAL OF SEPARATE TECHNICAL
UNIT OF EXHAUST SYSTEMS FOR MOTORCYCLE
PURSUANT
TO REGULATION (EU) 134/2014**

**UNIFORM PROVISIONS CONCERNING THE APPROVAL OF
TWO- OR THREE-WHEEL VEHICLES AND QUADRICYCLES
WITH REGARD TO NOISE-ABATEMENT DEVICE**


Total number of pages: 11

Predosa, IT
19.09.2016



Technical manager



	INFORMATION DOCUMENT N° S070/134/2014 rev. 00	Date: 19/09/2016 Page 2/6
-----------------------------------------------------------------------------------	----------------------------------------------------------------	--------------------------------------------


Confirmation

We declare hereby that the specimen submitted for this approval test have been manufactured and assembled in conditions of ordinary mass production and that they are compatible with the enclosed documentation.

Predosa, IT
19.09.2016


 Technical manager




	INFORMATION DOCUMENT N° S070/134/2014 rev. 00	Date: 19/09/2016 Page 3/6
-----------------------------------------------------------------------------------	----------------------------------------------------------------	--------------------------------------------

Contents

Confirmation	2
Contents	3
0. GENERAL INFORMATION.....	4
1. GENERAL CONSTRUCTION CHARACTERISTICS.....	5
Enclosures:	
Appendix 1 - Composition of the original exhaust system + original parts	1
Appendix 2 - Drawing of silencer "S070: SILENCER", date: 02/08/2016, pages 1	
Appendix 3 - Drawing of dB killer "S070: TAPPO", date: 02/08/2016, pages 1	
Appendix 4 - Drawing of composition "S070: ASSEMBLY", date: 02/08/2016, pages 1	
Appendix 5 - Fitting instructions, pages 1	



	INFORMATION DOCUMENT N° S070/134/2014 rev. 00	Date: 19/09/2016 Page 4/6
-----------------------------------------------------------------------------------	----------------------------------------------------------------	--------------------------------------------

0. GENERAL INFORMATION

B. General information concerning systems, components or separate technical units

- 0.7. Make (trade name of manufacturer):** Termignoni
- 0.8. Type:** S070
- 0.8. Variants:** SSSF, SSTF, STSF, STTF, TSSF, TSTF, TTSTF, TTTF, CSSF, CSTF, CTSF, CTTF, ASSF, ASTF, ATSF, ATTF
for details see page 6.
- 0.8.1. Commercial name (if available): N/A
- 0.8.2. Type-approval number (if available): N/A
- 0.8.3. Type-approval issued on (date, if available): N/A
- 0.9. Company name and address of manufacturer:** Termignoni S.p.A.
Via della Rampina, 1
I-15077 Predosa (AL)
Italy
- 0.9.1. Name and address of assembly plants: Termignoni S.p.A.
Via della Rampina, 1
I-15077 Predosa (AL)
Italy
- 0.9.2. Name and address of manufacturer's authorised representative, if any: N/A
- 0.10. Vehicle for which the system/separate technical unit is intended for**
- 0.10.1. Type: WCX0
Suzuki Motor Corporation
e4*168/2013*00008
- 0.10.2. Variant: 1
- 0.10.3. Version: 1,2
- 0.10.4. Commercial name (if available): SV650
- 0.10.5. Category, subcategory and sub-subcategory of vehicle: L3e-A3

C. General information concerning vehicle, systems, components or separate technical units

0.12. Conformity of production

- 0.12.1. Description of overall quality-assurance management systems
according to described internal quality management
initially assessment has been executed





1. GENERAL CONSTRUCTION CHARACTERISTICS

1.8. Propulsion unit performance

- | | | |
|--------|----------------------------------------------------------------------|-----------------------------------------------------------|
| 1.8.1. | Declared maximum vehicle speed: | 205 km/h |
| 1.8.3. | Maximum net power combustion engine: | 56,0 kW at 8500 min ⁻¹
at A/F ratio: 12,5:1 |
| 1.8.4. | Maximum net torque combustion engine: | 64 Nm at 8100 min ⁻¹
at A/F ratio: 12,5:1 |
| 1.8.5. | Maximum continuous-rated power electric motor (15/30 minutes power): | N/A |
| 1.8.6. | Maximum continuous-rated torque electric motor: | N/A |
| 1.8.7. | Maximum continuous total power for propulsion: | N/A |
| 1.8.8. | Maximum continuous total torque for propulsion: | N/A |
| 1.8.9. | Maximum peak power for propulsion: | N/A |

4. GENERAL INFORMATION ON ENVIRONMENTAL AND PROPULSION UNIT PERFORMANCE

4.0. General information on environmental and propulsion performance

- | | | |
|--------|---------------------|-----|
| 4.0.1. | Environmental step: | N/A |
|--------|---------------------|-----|

- | | | |
|--------|-------------|-----|
| 4.0.2. | Sound level | N/A |
|--------|-------------|-----|

4.4. Additional information on environmental and propulsion unit performance

- | | | |
|--------|----------------------------------------------------------------------------------------------------------------------------------------------------------------------------------------------|-----|
| 4.4.4. | Applicable information document set out in respectively UN Regulation No 92 shall supplement this information document with regards to the noise-abatement devices installed on the vehicle. | N/A |
|--------|----------------------------------------------------------------------------------------------------------------------------------------------------------------------------------------------|-----|





Technical description:

Non-original exhaust system, consisting out of one silencer on the rear side of the vehicle, maximum dimensions 130x111 mm and, total length 350 mm (without endcap), absorption-reflection principle with outlet pipe \varnothing 36 mm according to drawings no. S070: SILENCER and S070: TAPPO, in combination with original header system. The silencer has been made in Stainless steel or as alternative in Titanium, Carbon fiber or Aluminium.

Repair and maintenance information are in manual and webpages: www.termignoni.it

Position and direction of the tail pipe:

On the right side of the vehicle

Used materials:

- SSSF (Stainless steel (shell), Stainless steel (outlet pipe), Stainless steel (punched-holes pipe), Fiberglass)
- SSTF (Stainless steel (shell), Stainless steel (outlet pipe), Titanium (punched-holes pipe), Fiberglass)
- STSF (Stainless steel (shell), Titanium (outlet pipe), Stainless steel (punched-holes pipe), Fiberglass)
- STTF (Stainless steel (shell), Titanium (outlet pipe), Titanium (punched-holes pipe), Fiberglass)
- TSSF (Titanium (shell), Stainless steel (outlet pipe), Stainless steel (punched-holes pipe), Fiberglass)
- TSTF (Titanium (shell), Stainless steel (outlet pipe), Titanium (punched-holes pipe), Fiberglass)
- TTTF (Titanium (shell), Titanium (outlet pipe), Titanium (punched-holes pipe), Fiberglass)
- CSSF (Carbon fiber (shell), Stainless steel (outlet pipe), Stainless steel (punched-holes pipe), Fiberglass)
- CSTF (Carbon fiber (shell), Stainless steel (outlet pipe), Titanium (punched-holes pipe), Fiberglass)
- CTSF (Carbon fiber (shell), Titanium (outlet pipe), Stainless steel (punched-holes pipe), Fiberglass)
- CTTF (Carbon fiber (shell), Titanium (outlet pipe), Titanium (punched-holes pipe), Fiberglass)
- ASSF (Aluminum (shell), Stainless steel (outlet pipe), Stainless steel (punched-holes pipe), Fiberglass)
- ASTF (Aluminum (shell), Stainless steel (outlet pipe), Titanium (punched-holes pipe), Fiberglass)
- ATSF (Aluminum (shell), Titanium (outlet pipe), Stainless steel (punched-holes pipe), Fiberglass)
- ATTF (Aluminum (shell), Titanium (outlet pipe), Titanium (punched-holes pipe), Fiberglass)

Place of marking:

On the silencer, see enclosed drawings of silencer and composition
Appendix 2 - Drawing of silencer "S070: SILENCER", date: 02/08/2016.



INFORMATION DOCUMENT N° S070/134/2014 rev. 00 - Appendix

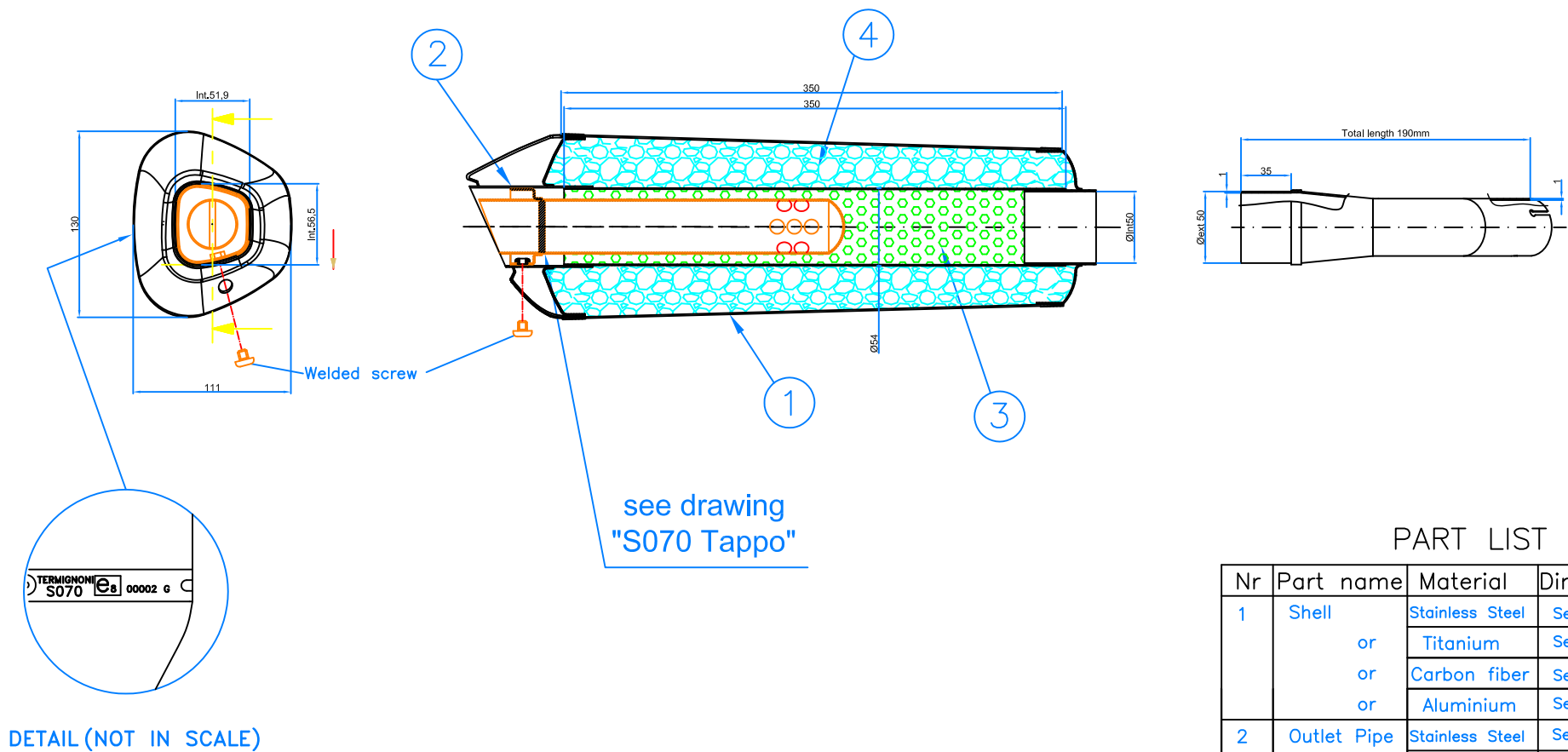
Appendix 1 - Composition of the original exhaust system + original parts

No.	Components parts, dimensions in mm	Dimensions of the part in mm or original part / replacement part	Part no. or homologation no.
1)	Collectors and final body	Original part	--
2)	Catalytic converter	Original part	--
3)	Reduction	Notice drawing	S070: TAPPO
4)	Silencers (outlet pipe Ø 36 mm)	One silencer on the rear side of the vehicle, maximum dimensions 130x111 mm and, total length 350 mm (without endcap), absorption-reflection principle with outlet pipe Ø 36 mm	S070: SILENCER



General tolerance: ±1mm

INFORMATION DOCUMENT N° S070/134/2014
Appendix 2 - Drawing of silencer "S070: SILENCER"



PART LIST

Nr	Part name	Material	Dimensions	QT
1	Shell	Stainless Steel	See Drawing	1x
	or	Titanium	See Drawing	1x
	or	Carbon fiber	See Drawing	1x
	or	Aluminium	See Drawing	1x
2	Outlet Pipe	Stainless Steel	See Drawing	1x
	or	Titanium	See Drawing	1x
3	Punched-holes pipe	Stainless Steel	See Drawing	1x
	or	Titanium	See Drawing	1x
4	Sound deadener	Fiberglass	See Drawing	1x

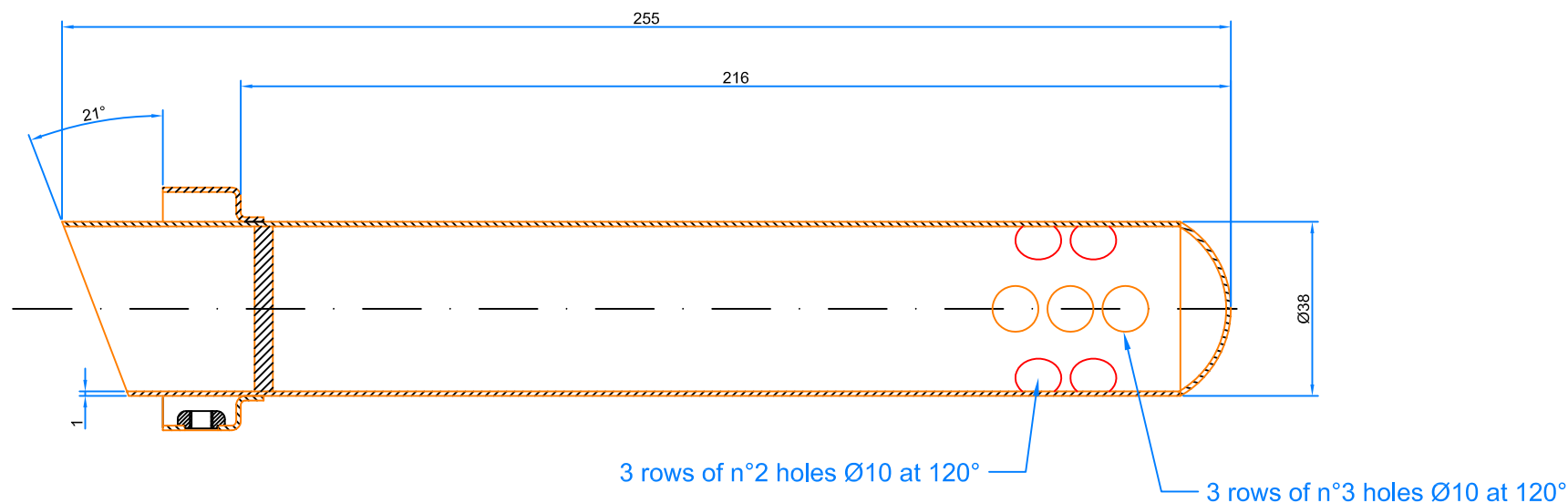
SCALE: MODEL: Suzuki SV 650 2016
DATE: 02/08/2016 1 Sil. cod. S070
NAME: C.Zappia S070 e8 00002 G
TYPE: S070: SILENCER

Termignoni s.p.a.

General tolerance: $\pm 1\text{mm}$

MATERIAL: S.Steel or Titanium

INFORMATION DOCUMENT N° S070/134/2014
Appendix 3 - Drawing of dB killer "S070: TAPPO"



SCALA:

DATUM: 02/08/2016

NAME: C. ZAPPIA

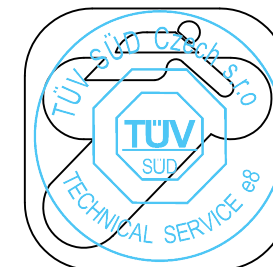
MODEL:

Suzuki SV 650 2016
1 Sil. cod. S070
S070 e8 00002 G

Tip: S070: Tappo

Termignoni

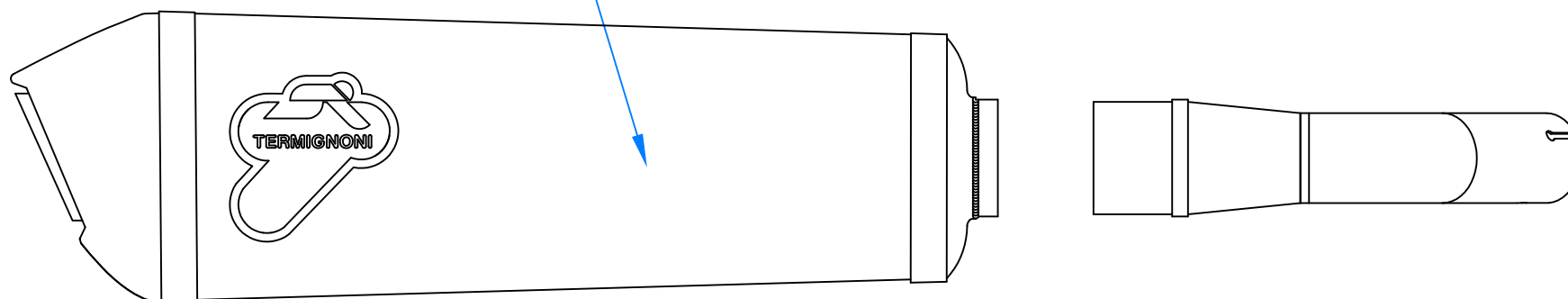
s.p.a.



Cod. TERMIGNONI TER610

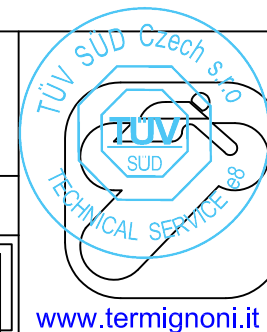
info@termignoni.it

SILENCER
see drawing "S070": Silencer"



SCALE:	MODEL: Suzuki SV 650 2016 1 Sil. cod. S070 S070 e8 00002 G
DATE: 02/08/2016	
NAME: C.Zappia	
TYPE:	S070: ASSEMBLY

Termignoni s.p.a.





Termignoni s.p.a.
Via della Rampina, 1
15077 PREDOSA (AL) Italy
Telef. +39 0131.71666
Fax +39 0131.71696
www.termignoni.it
Part. IVA - C.F. 00862780061
Iscriz. C.C.I.A.A. AL 130295
Iscriz. Tribunale Reg. Soc. 7721
N. Export AL 009063
C.C. IT 00862780061
Cap. Soc. € 1.000.000,00 int. vers.

FITTING INSTRUCTIONS

For Termignoni exhaust systems

A. Dismantling the original exhaust system

1. Remove any casing impeding clear access
2. Detach the silencer support(s) and the original silencer from the branch pipe and/or exhaust manifold

B. Fitting Termignoni silencer(s)

1. Fit the Termignoni silencer(s) to the original branch pipe, or use the Termignoni branch pipe to fit the exhaust manifold
2. Attach the silencer(s) with the mounting(s) supplied with the vehicle, leaving the screws and bolts loose
3. Adjust the exhaust system so that when fully inserted it is at least 5 mm from any other component of the vehicle
4. Tighten all screws and bolts
5. Test the vehicle and check all connections, tightening the screws and bolts if necessary
6. After about 100 km check all the connections again and tighten the screws and bolts if necessary

WARNING:

Take care when working on the exhaust system after testing the vehicle since the surfaces could be very hot

